

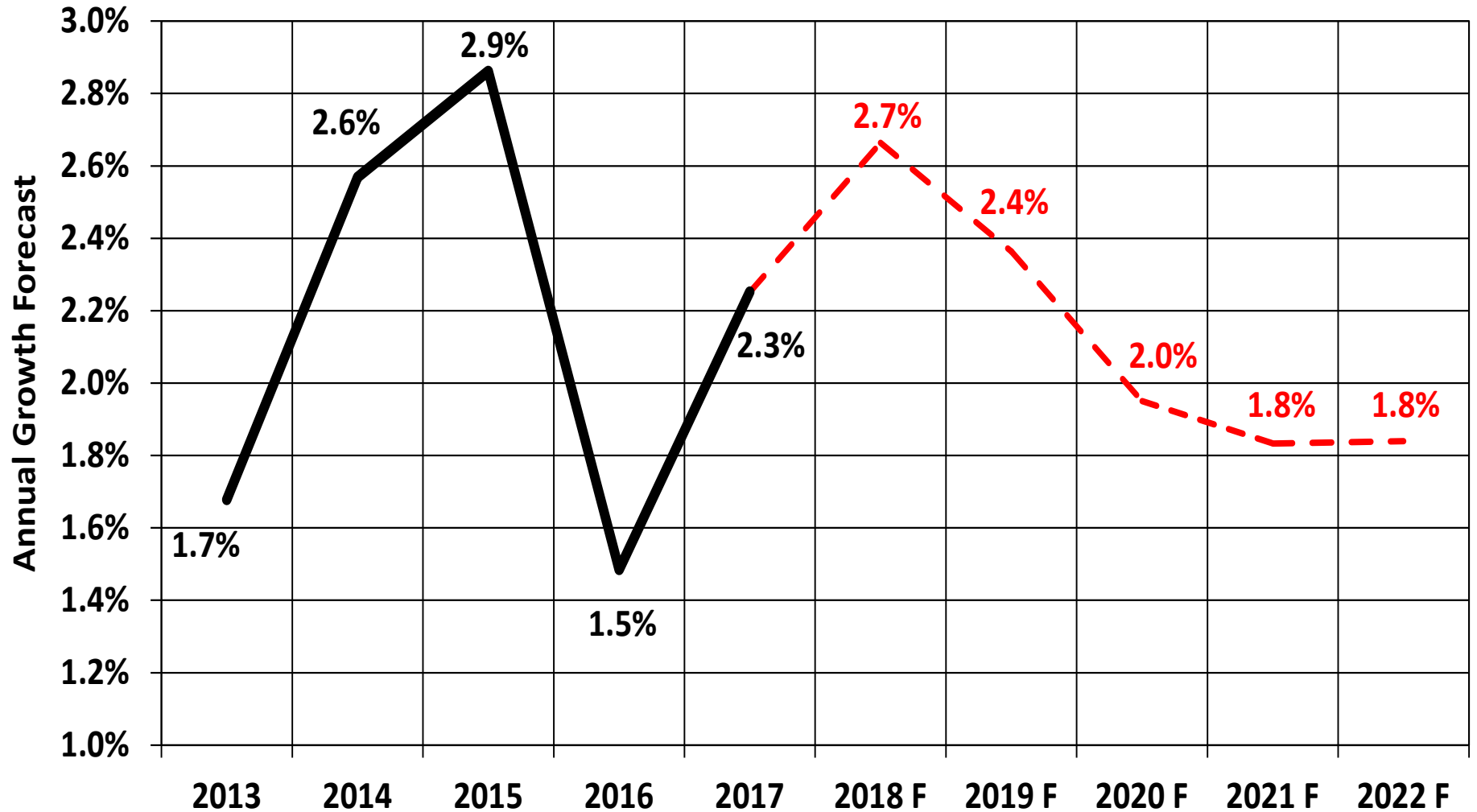


Spokane Estate Planning Council
May 15, 2018

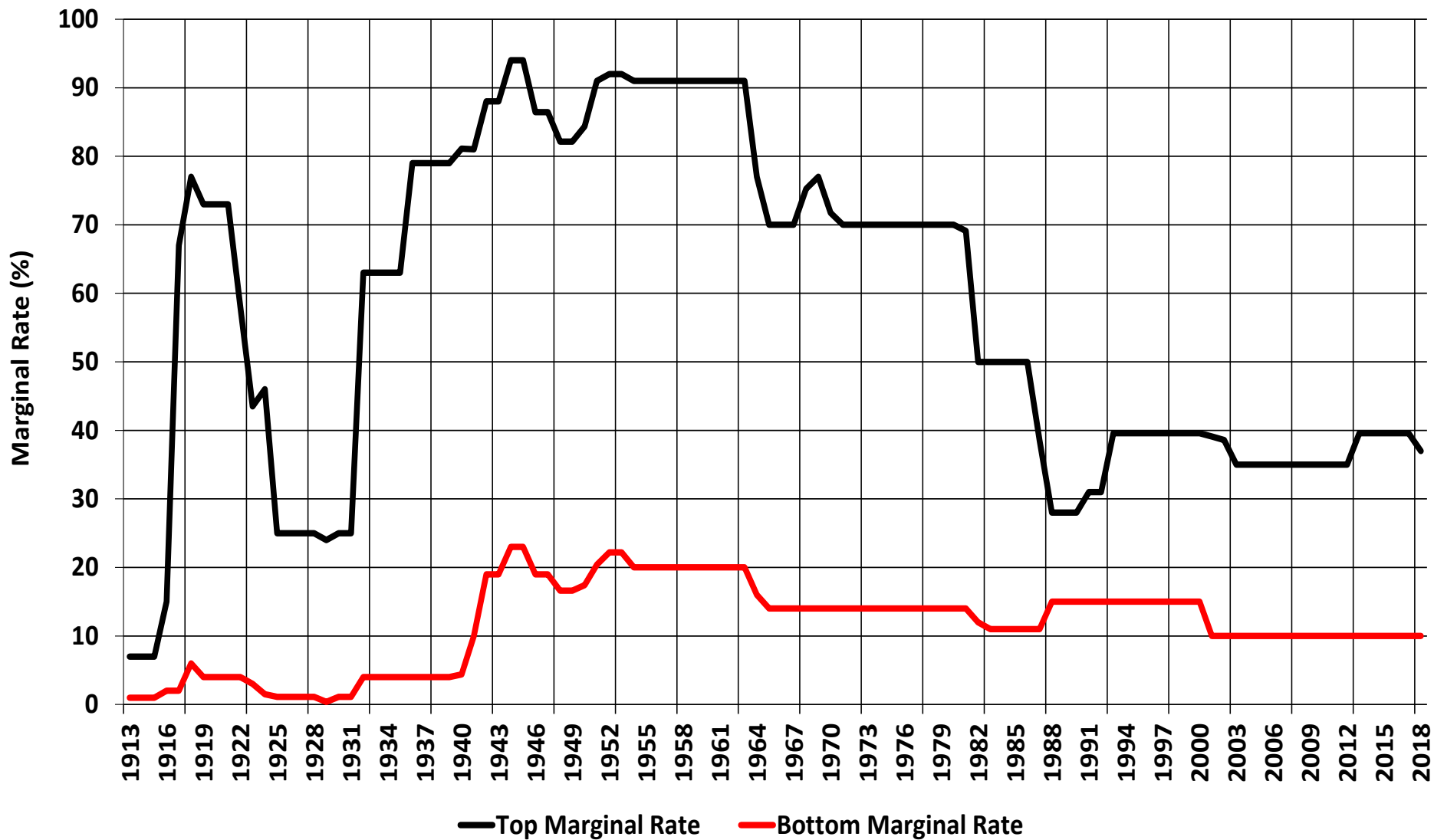
U.S. and Inland Northwest Economic Outlook

Grant D. Forsyth, Ph.D.
Chief Economist
Grant.Forsyth@avistacorp.com

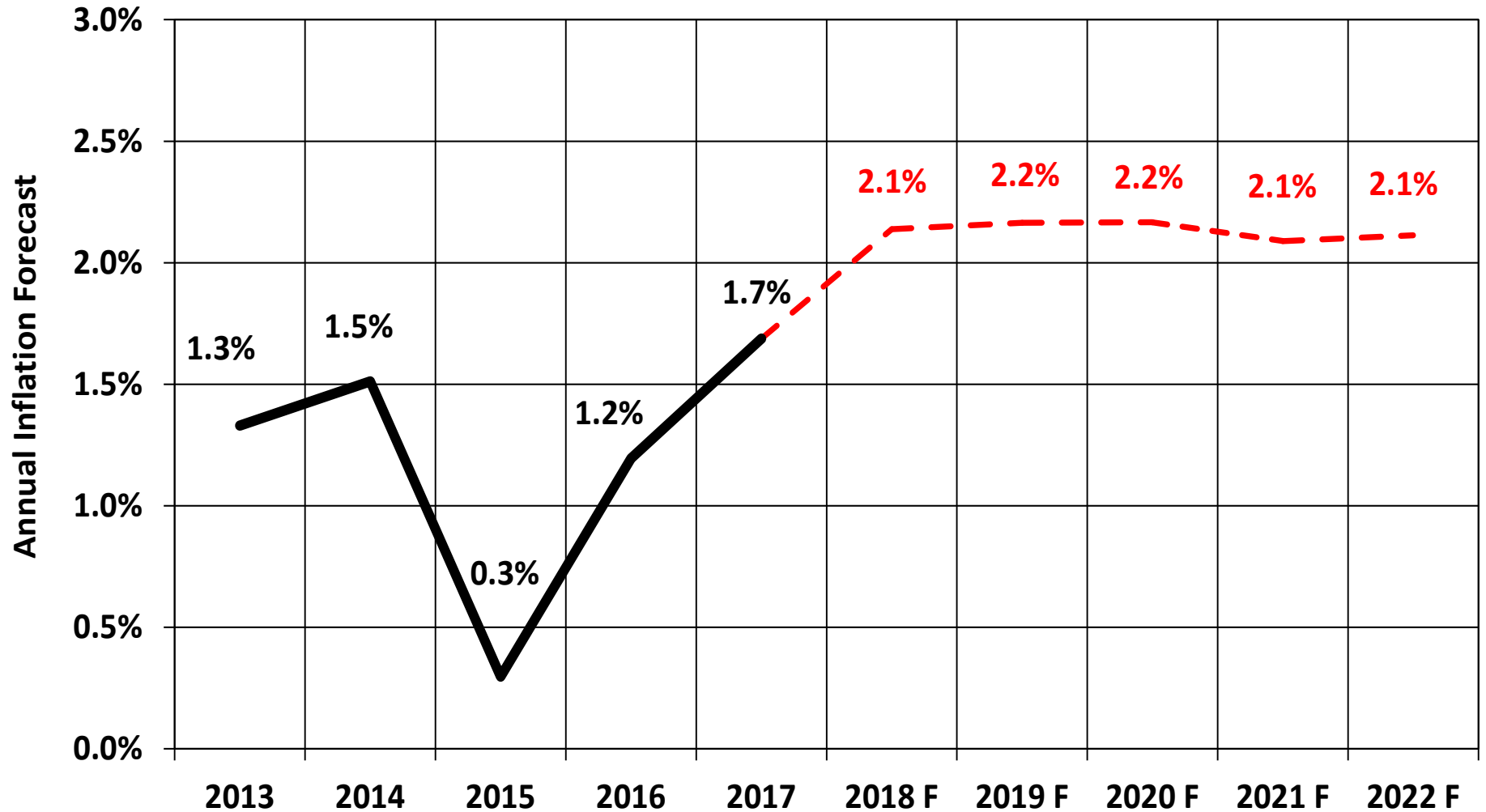
U.S. GDP Growth Forecast to 2022



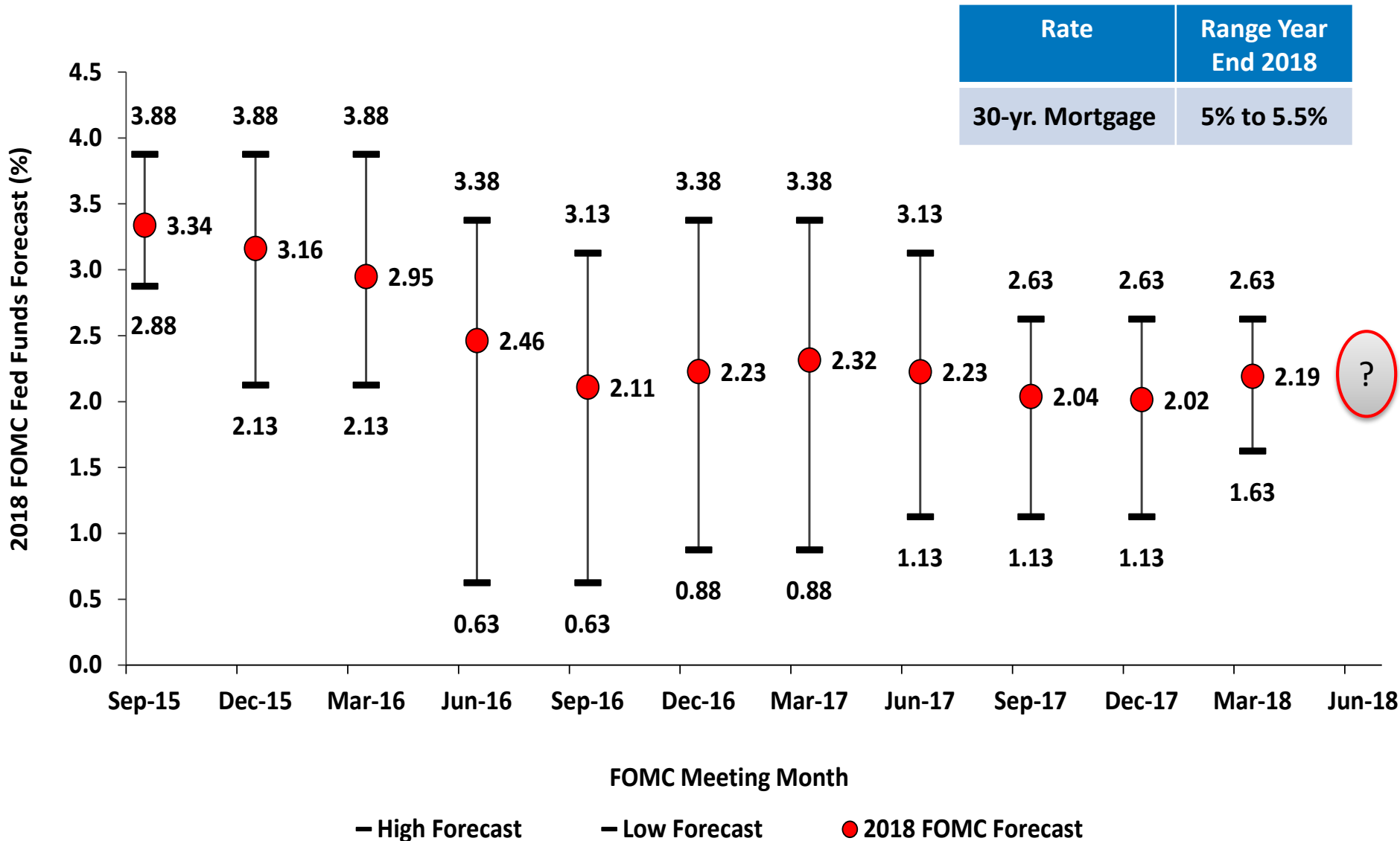
U.S. Marginal Tax Rates, 1913-2018



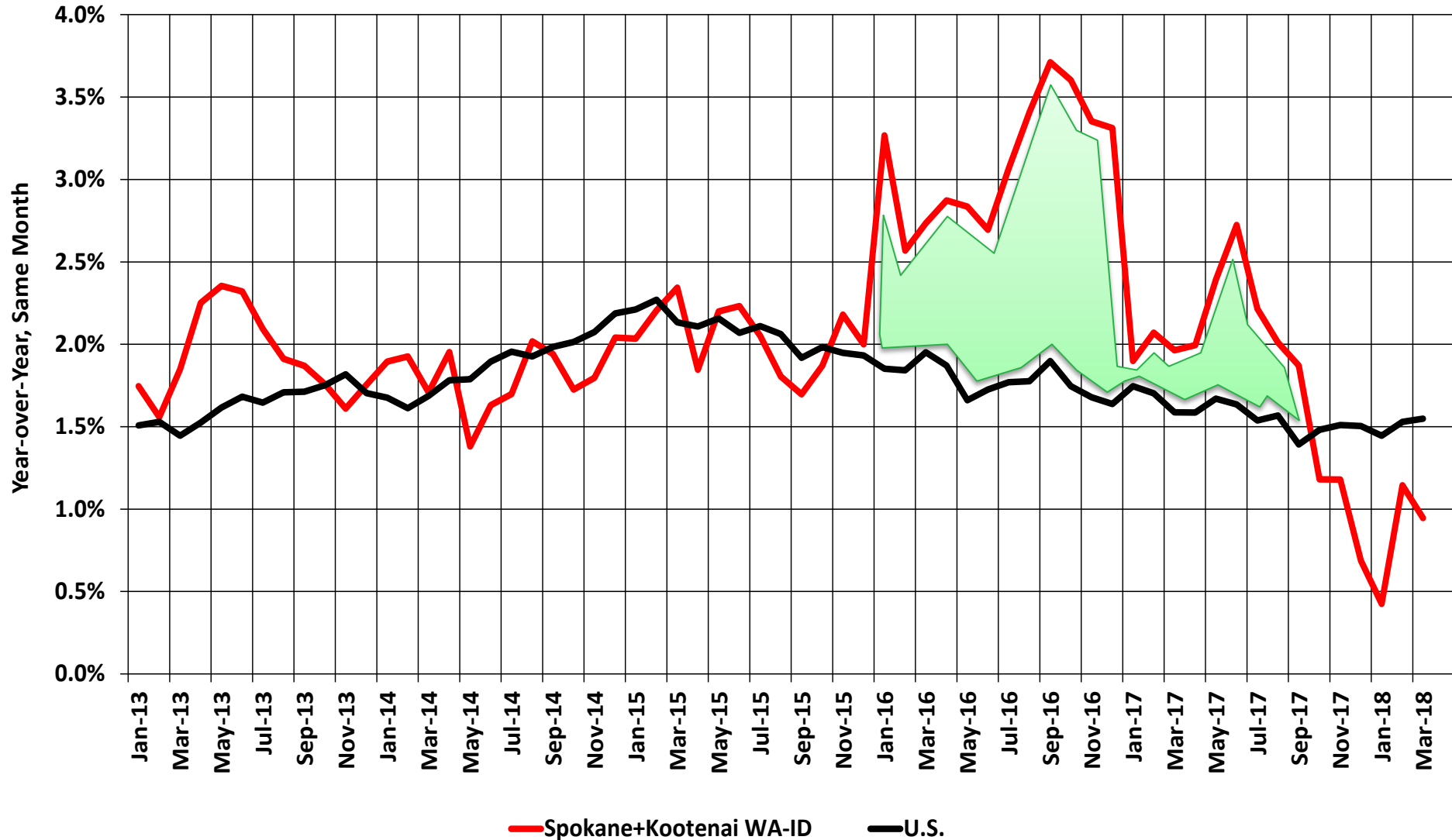
U.S. Inflation Forecast to 2022



Federal Funds “Dot Plot” Forecast, 2018

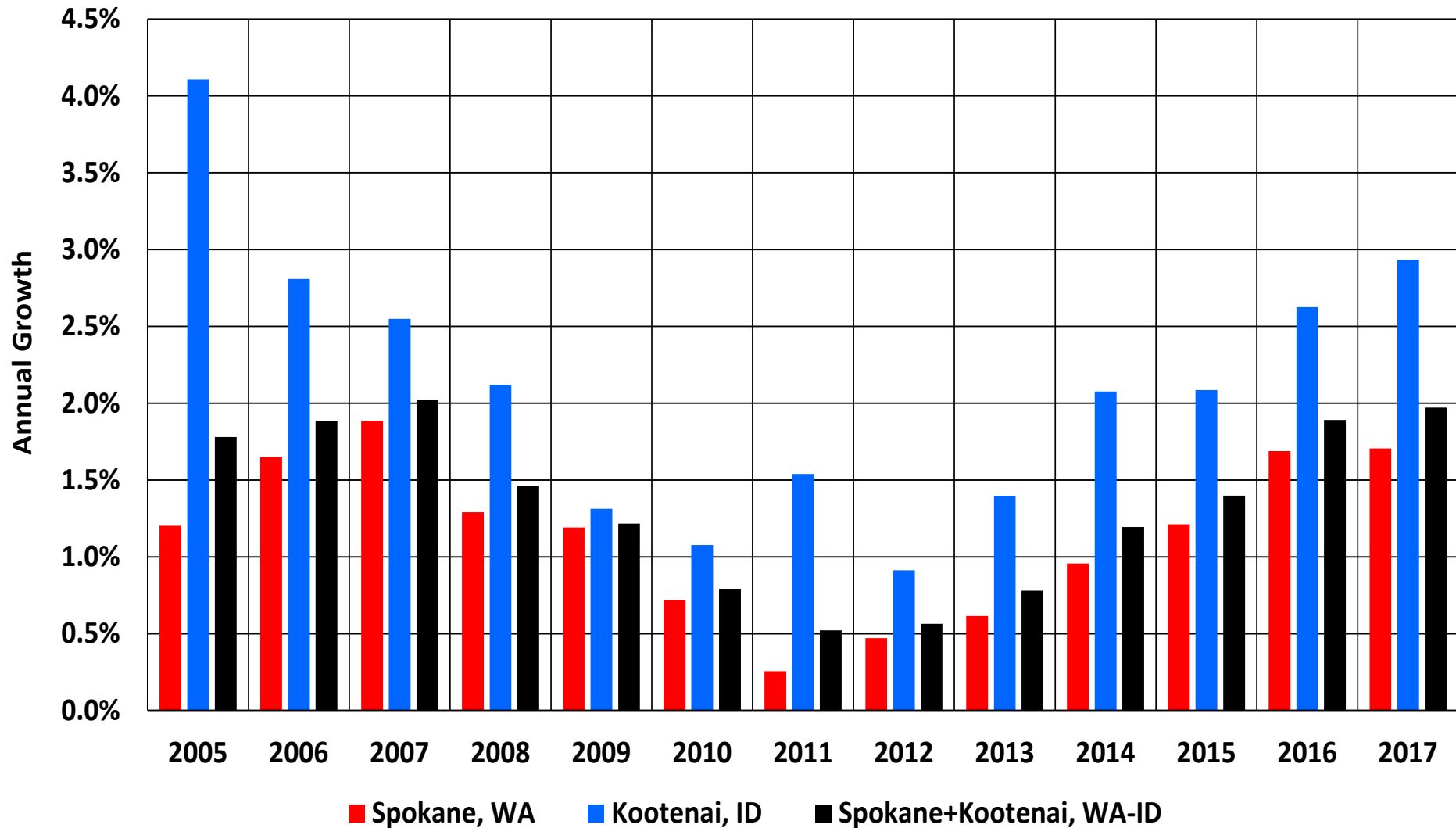


Spokane+Kootenai MSA Employment Growth, 2013-2018



Source: BLS and author's calculations.

Spokane+Kootenai MSA Population Growth, 2005-2017

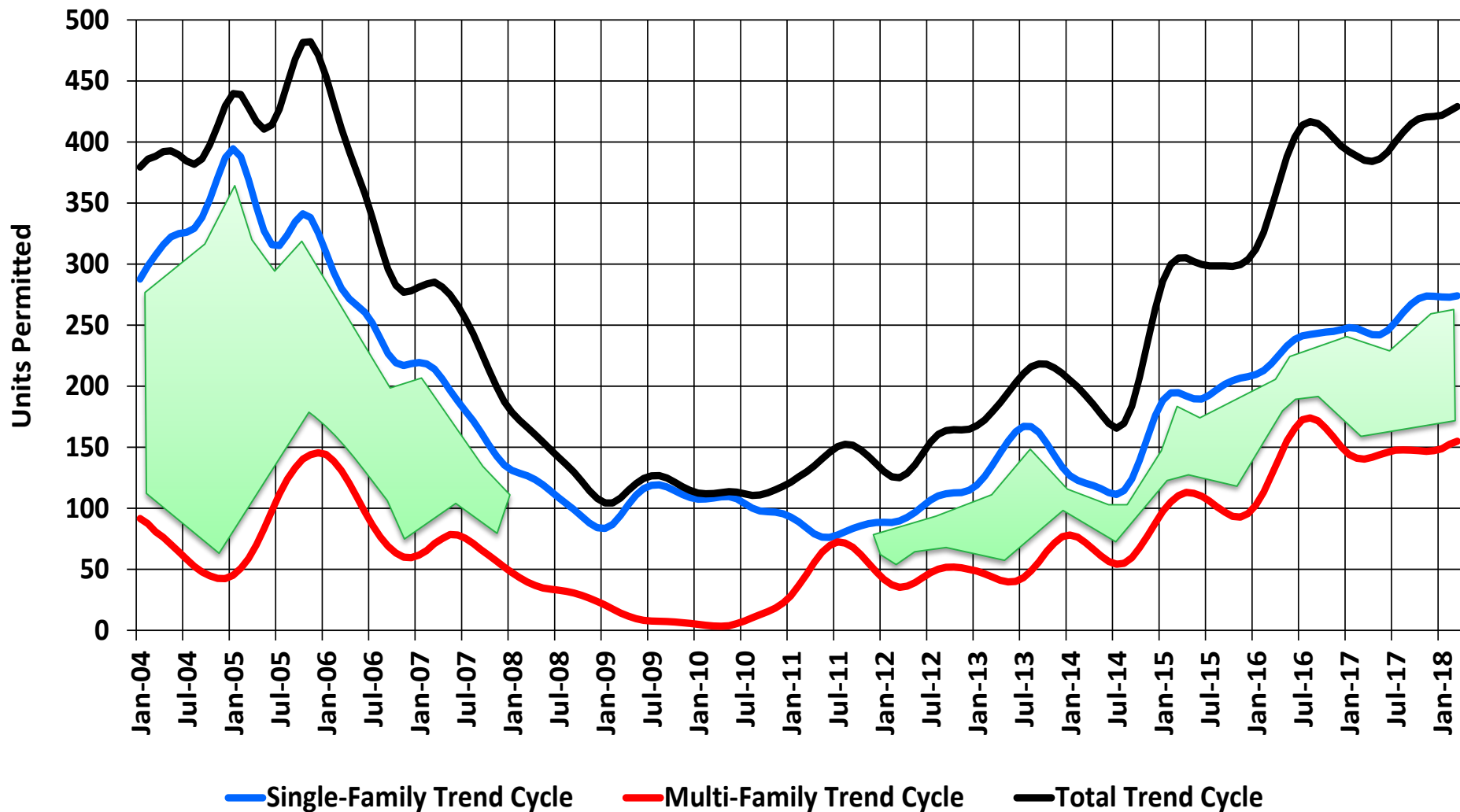


Spokane+Kootenai County Initial Claims for Unemployment Insurance, 2004-2018

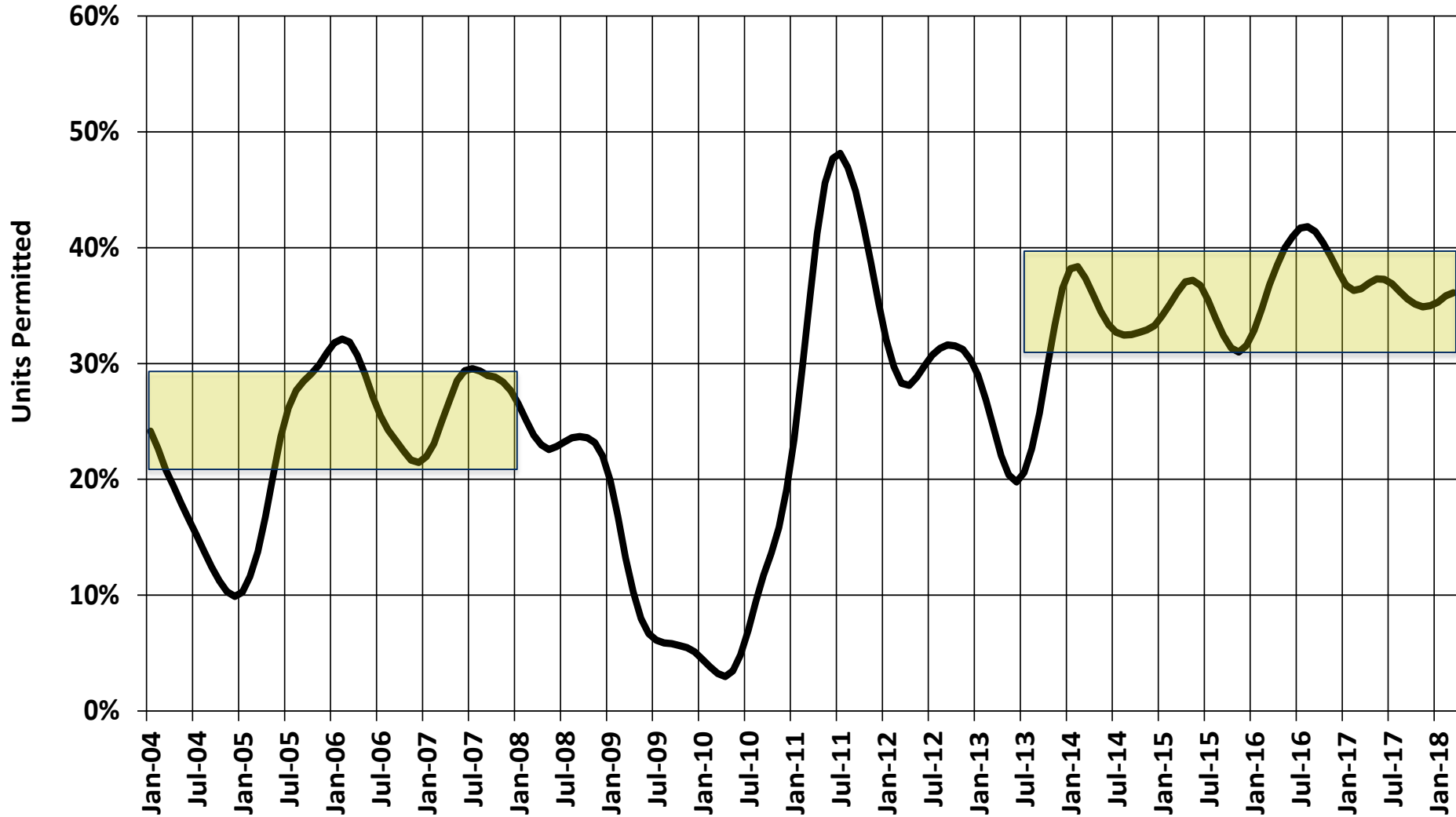


Source: WA and ID Labor Departments and author's calculations.

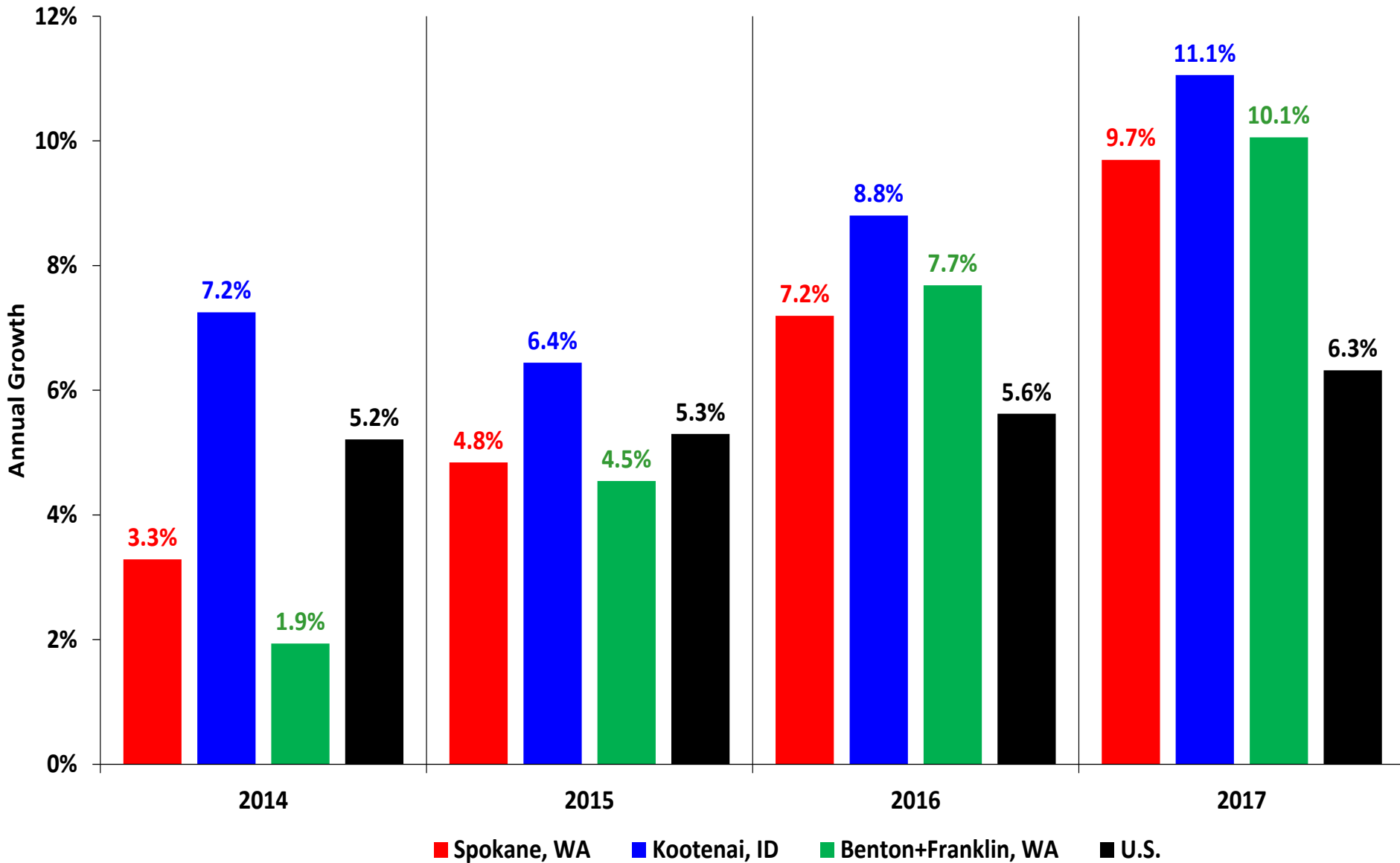
Spokane+Kootenai County Residential Units Permitted, 2004-2018



Spokane+Kootenai Share of Multi-Family Units, 2004-2018



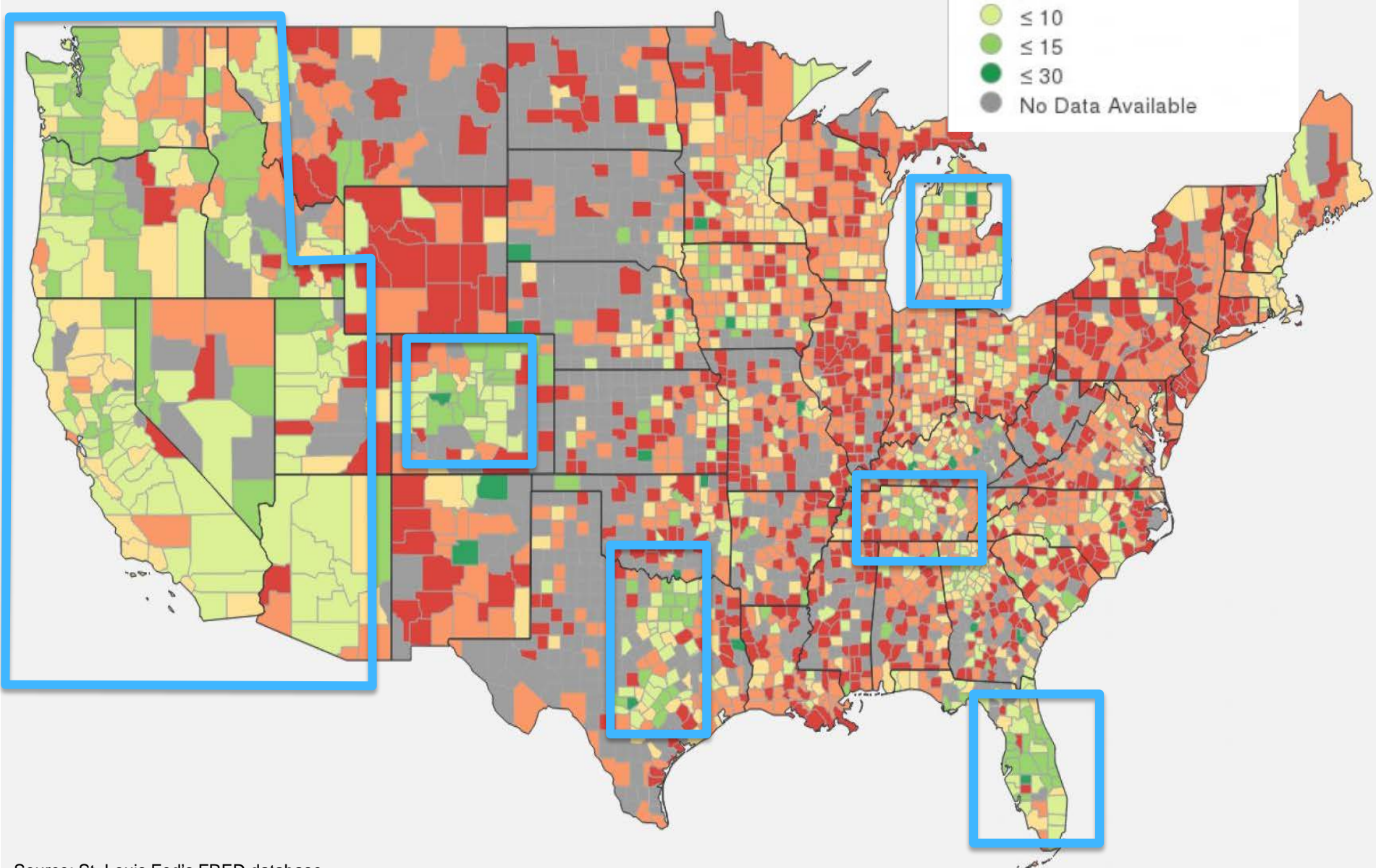
MSA Existing Home Price Growth, 2014-2018



GEO FRED: 2017 HPI Growth

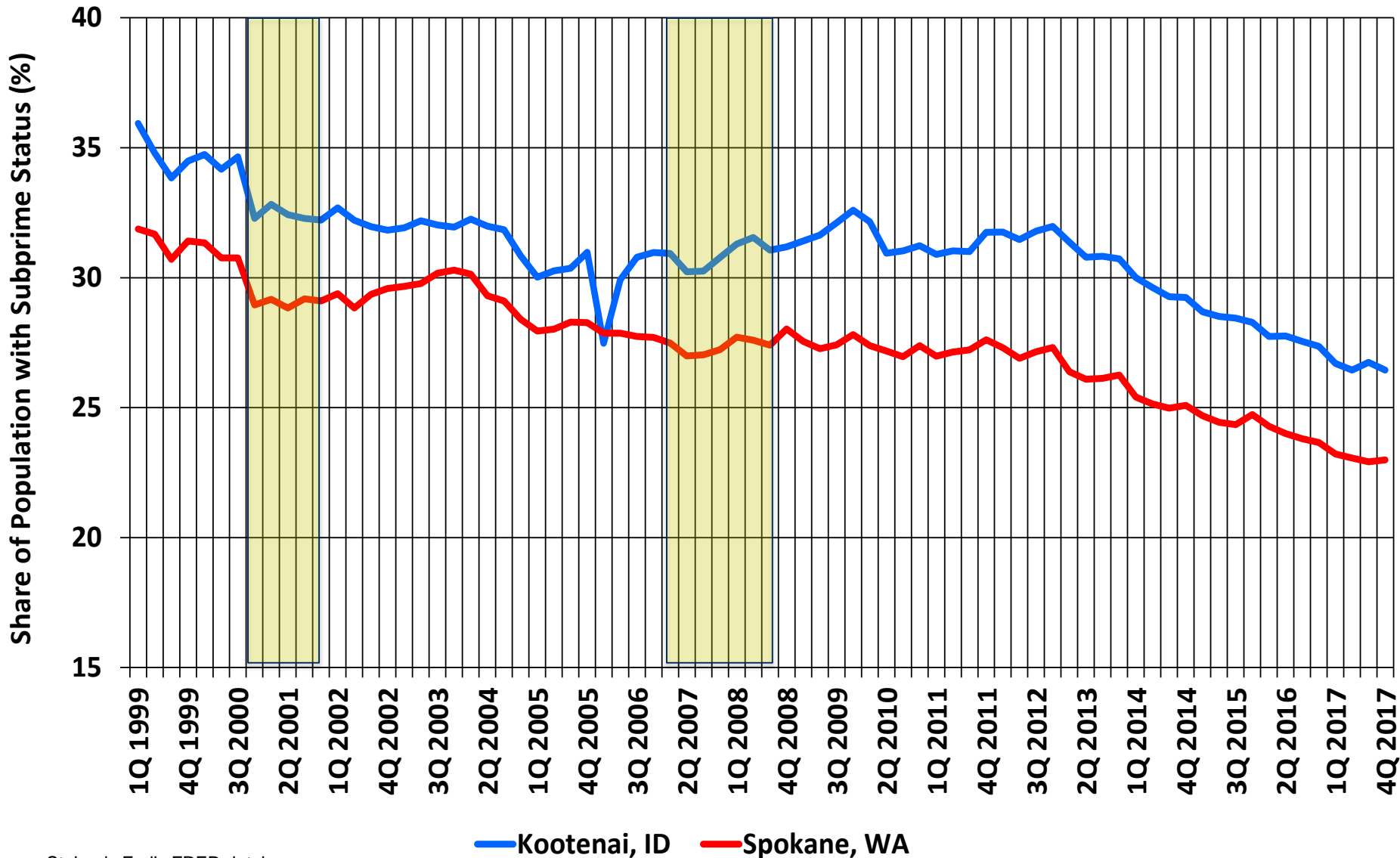
UNITS: (Percent Change from Year Ago)

- ≤ 2
- ≤ 5
- ≤ 7
- ≤ 10
- ≤ 15
- ≤ 30
- No Data Available



Source: St. Louis Fed's FRED database

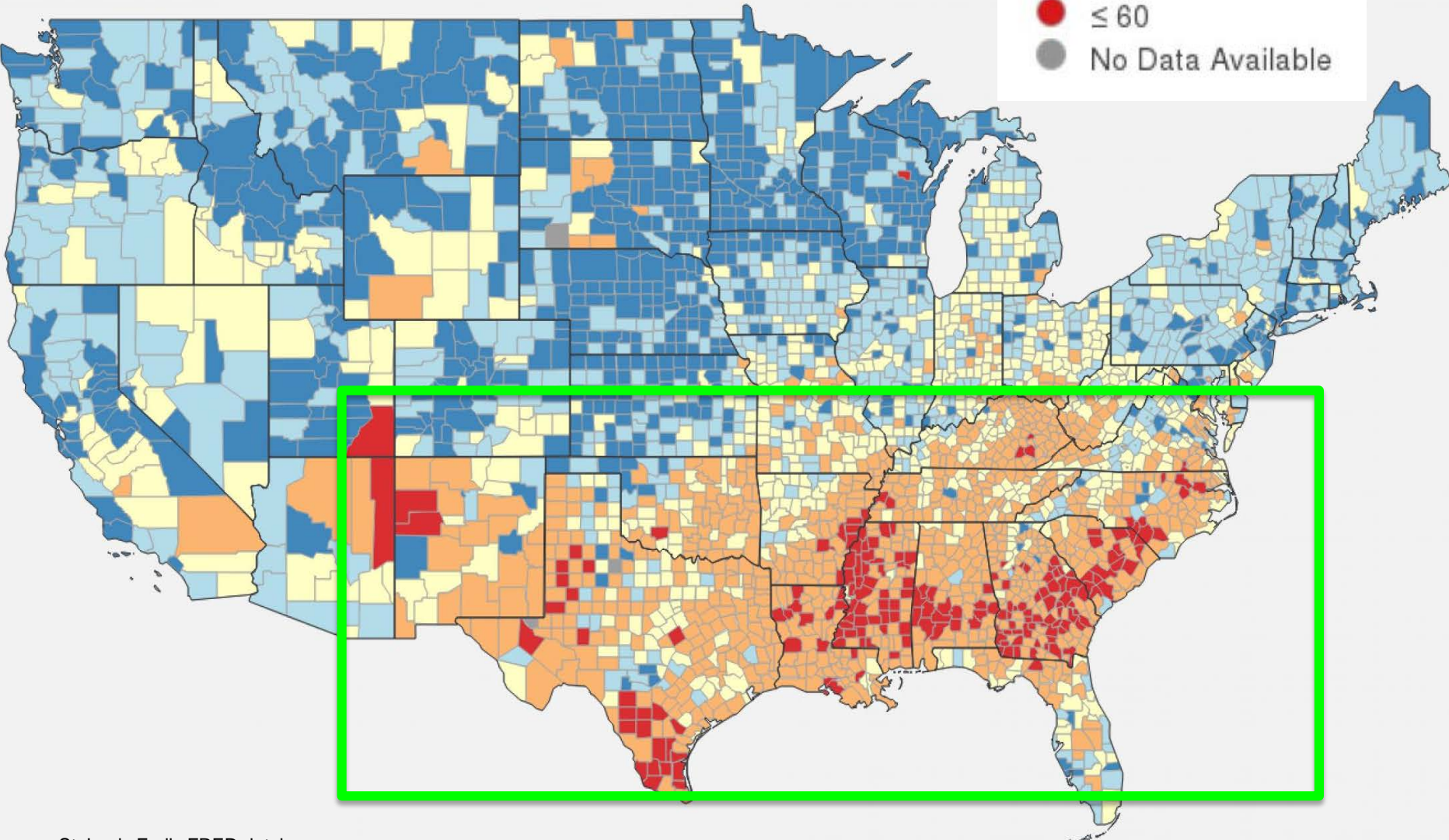
County Equifax Subprime as a Share of Population, 1999-2017



GEO FRED: 3Q 2017 Equifax Subprime as Share of Population

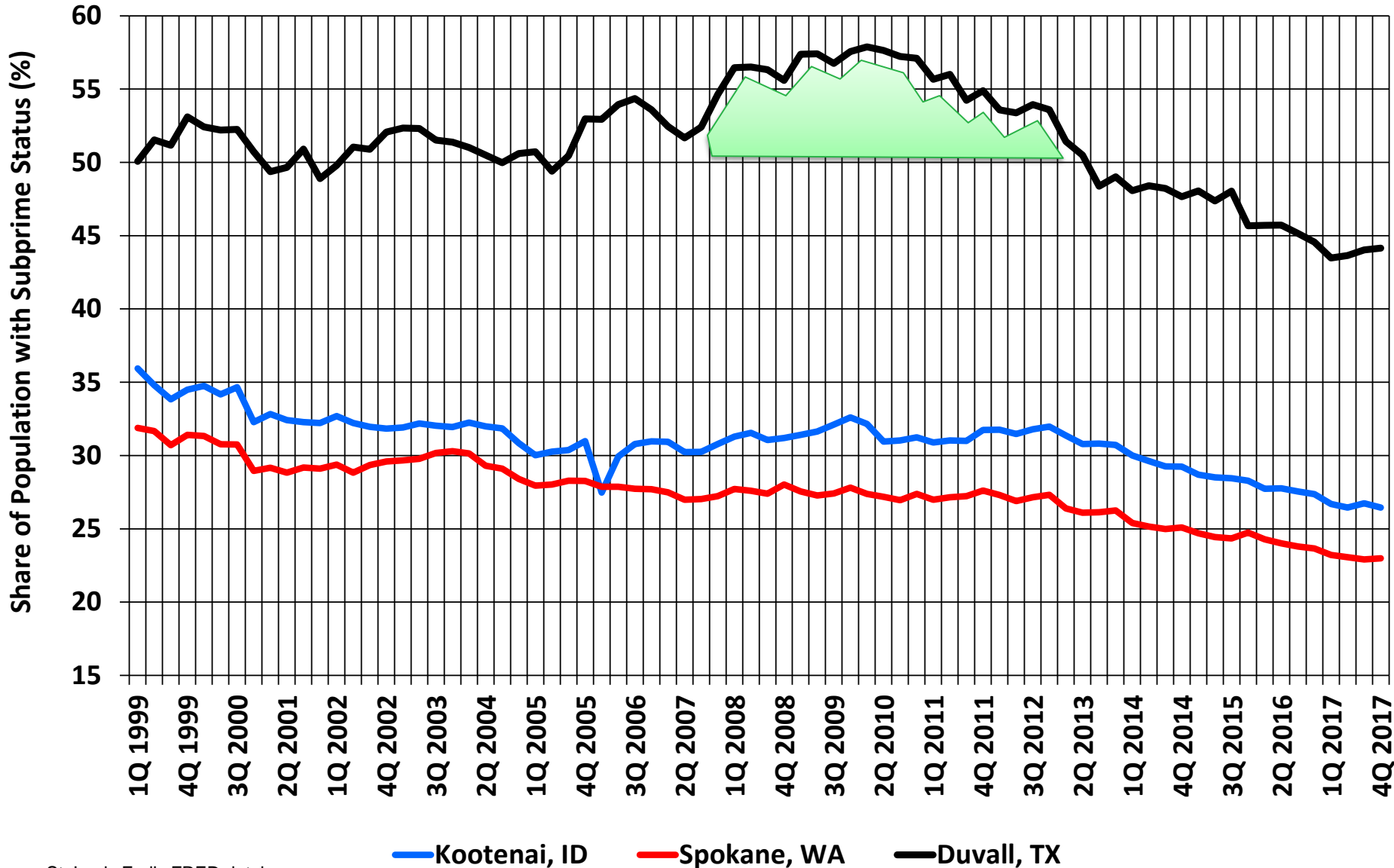
UNITS: (Percent)

- ≤ 20
- ≤ 25
- ≤ 30
- ≤ 40
- ≤ 60
- No Data Available



Source: St. Louis Fed's FRED database

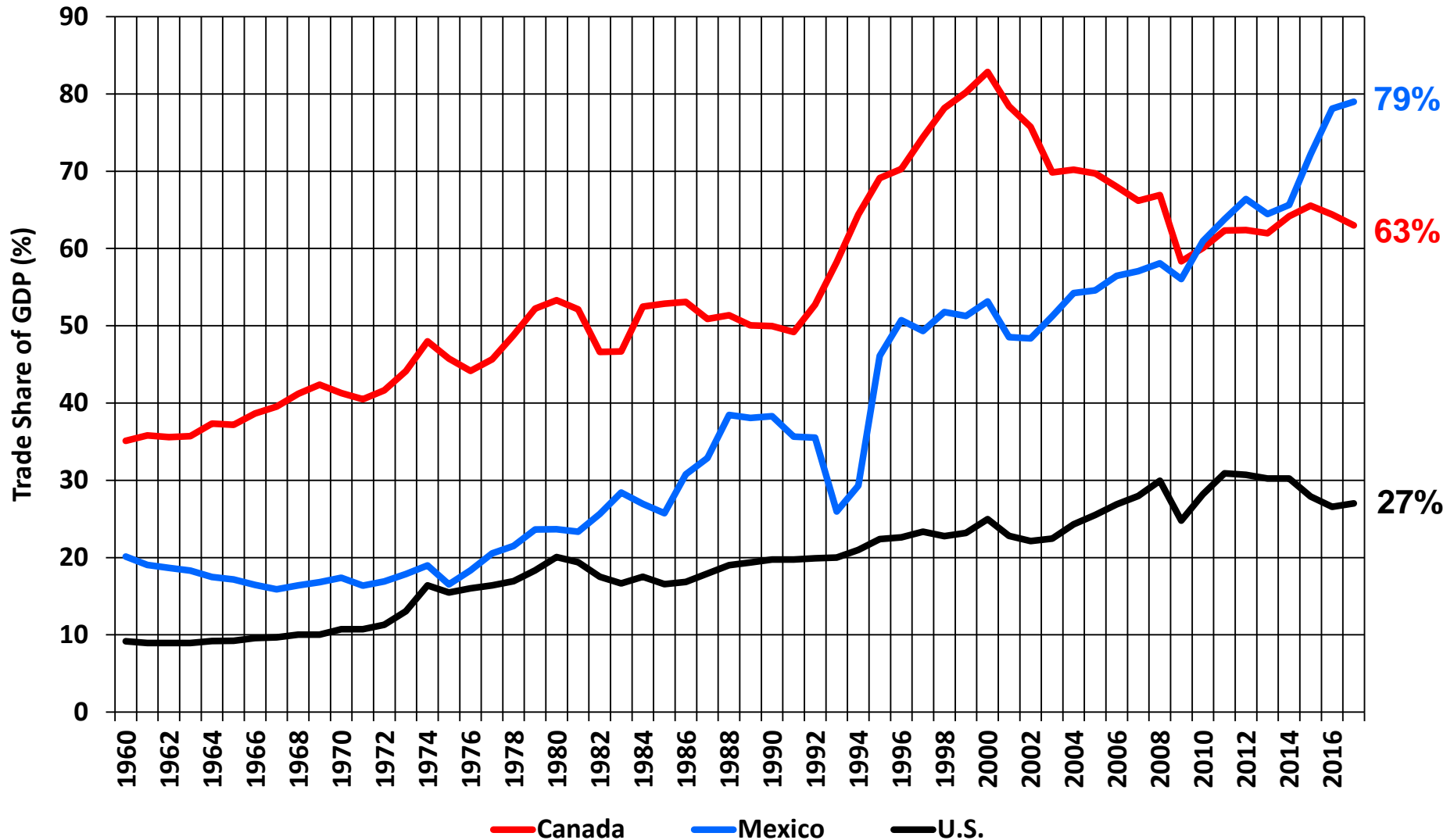
County Equifax Subprime as a Share of Population, 1999-2017



Source: St. Louis Fed's FRED database

NAFTA Country Trade Dependence, 1960-2017

(Monetary Value of Imports + Monetary Value of Exports) ÷ National GDP



Thank You!

Questions?